









Luxury Backlit Frames

**UNICA**  
LUXURY LIGHTED MIRRORS  
*by Cantoni*

**MPH BACKLIT PANELS  
COLLECTION**

	The Collection and the mission	3
	MPH Collection	5
	Standard dimensions	9
	Finishes	11
	Technical sheet	13
	Quality	15

## JUST 4.5 CM TO CONVEY BEAUTY

**LED illuminated frames** with decorative or simple profiles encompassing all of the technology needed to enhance shapes and colours. The light passes through the image, adding depth and luminosity, transforming it into a splendid decorative picture.

Attention to detail and **Italian production quality** combine with the emotional richness of colour enhanced by a light that is unique in the world

The **Unica backlit panels** have been created with the aim of revolutionising display advertising, revealing the astounding creative potential offered by backlit frames in interior design.

Production flexibility, combined with the utmost reliability of the components and simplicity of use, make products from the PH and PHF collections valuable allies for residential as much as for retail space design projects.



## **MPH collection**

### **A revolution in communication displays**

Design: **Cantoni**

The Iconic wall-mounted mirror is built into glass with a colour backprinted image. The entire panel, enclosed in a silver anodized aluminium profile, is given special emphasis by LED backlighting.

The backprinted image could be an advertisement or an evocative image, making it equally suitable for adding the finishing touch to a commercial or residential space.

Backlit panels decorated with integrated mirror: an effective tool for the beauty industry that is also an effective medium for in-store brand awareness.

## MPH light - Iconic\*

Design: **Cantoni**

Dimensions: 1235x835x45 mm

LED backlit panel with integrated mirror and six I-light lenses. Customisable image backprinted onto glass with LED backlighting

I-light lights with adjustable brightness and colour gradation 4200° kelvin. Power supply unit integrated within the panel..



- . Glass thickness: 4 mm
- . Mirror 600 x 600 mm
- . Four-colour backprinting in high definition
- . Dimmable front light with independent actuator
- . Safety Film
- . Integrated power supply unit
- . Low energy consumption
- . Anodized aluminium profile 45 mm



\*example of customised creation



**FURNISH A BATHROOM**

ICONIC panel 1235 x 835 mm set with 12 I-light lenses

A unique object, combining the practical features of a mirror illuminated with the professional I-light lighting system and striking images perfect for creating evocative corners. Iconic is space lighting, a decorative picture and a lighted mirror, complete with natural and effective lighting for facial treatments. All of this encompassed in a single object with clean, carefully designed, unobtrusive lines.

## MPH - Iconic\*

Design: **Cantoni**

Dimensions: 1235x835x45 mm

LED backlit panel with integrated neutral mirror.

**Customised image backprinted to glass at high definition**

No external transformer required.

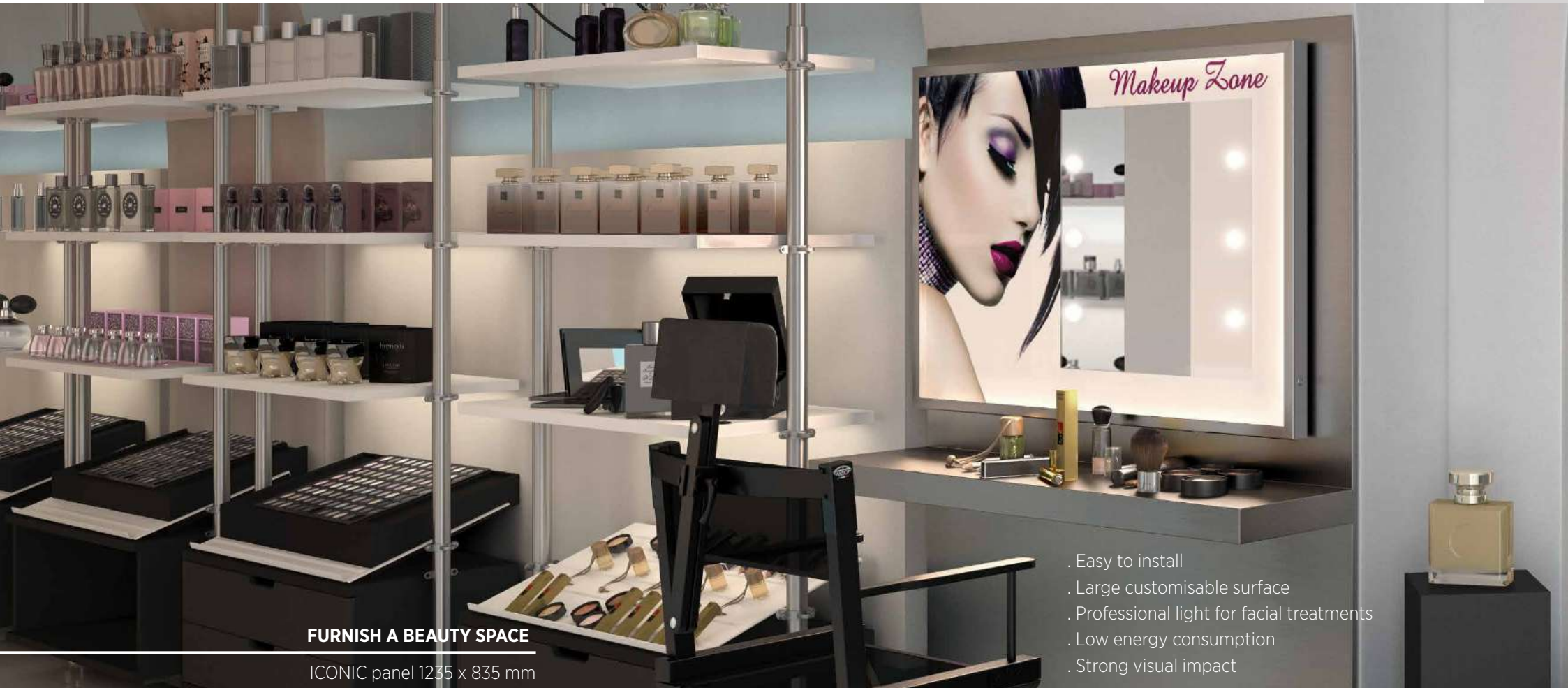
Easy to install.



- . Glass thickness: 4 mm
- . Mirror 600 x 600 mm
- . Four-colour backprinting in high definition
- . Safety Film
- . Integrated power supply unit
- . Low energy consumption
- . Anodized aluminium profile 45 mm



\*example of customised creation



**FURNISH A BEAUTY SPACE**

ICONIC panel 1235 x 835 mm

- . Easy to install
- . Large customisable surface
- . Professional light for facial treatments
- . Low energy consumption
- . Strong visual impact

MPH panels are effective tools that can help support brand awareness in the sales outlet whilst creating highly functional and evocative beauty corners.

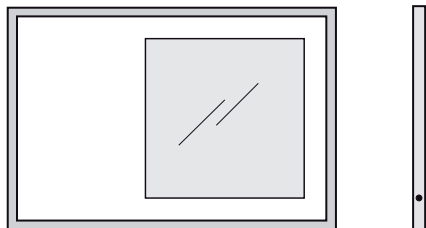


# STANDARD DIMENSIONS

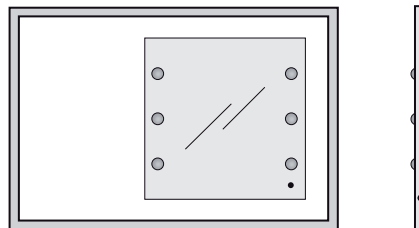
Unica | MPH Line

---

MPH10  
1235X835X45 mm



MPH10 light  
1235x835x45 mm

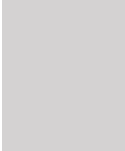


TECHNICAL DETAILS MPH10 Light model

Light gradation 4200° kelvin  
 Guaranteed life cycle: 100,000/h  
 Photobiological hazard: none  
 Low energy consumption

Integrated actuator with brightness regulator:  
 Quick touch = on/off  
 Press and hold = brightness +/-

TYPE:	mirror with 6 light points
VOLTAGE:	110-240 Vac 50/60 Hz
POWER and CURRENT with BACKLIT MODULE:	53 W 148 mA
FATTORE DI POTENZA 240Vac, 60Hz	Cosφ = 0,95



# FINISHES

Unica | MPH line

---



**Standard Anodized Finish**

ACH  
Matt chemical silver



**Standard Anodized Finish**

NC  
Matt chemical black

**Non-standard anodized finishes**

	Bright Silver	Light Smoky Grey	Dark Smoky Grey	Light Gold	Medium Gold	Light Bronze	Electro-colour Bronze	Medium Bronze	Dark Bronze	Black
Polished	ABL	FCL	FSL	OCL	OML	BCL	BEL	BML	BSL	NL
Satin	ABS	FCS	FSS	OCS	OMS	BCS	BES	BMS	BSS	NS
Brushed	ABB	FCB	FSB	OCB	OMB	BCB	BEB		BSB	NB
Matt chemical		FCC	FSC	FSC	OMC	BCC	BEC	BMC	BSC	

Cantoni will assess feasibility, methods, costs and times for the customisation of products on a case-by-case basis.

# TECHNICAL SHEET

Unica | MPH Line

---

**STRUCTURE**

6060-T5 non-deformable aluminium

. Min. size 450 mm

. Max. size 1835 mm

**GLASS/MIRROR**

High-tech, 4 mm thick glass/mirror

Ten times more resistant to corrosion

Three times more resistant to scratches compared to conventional mirrors.

Long lasting in typically damp environments

Safety Film

**LIGHTED PANEL**

Acrylic sheets with a high level of light emission, designed to enhance image brightness thanks to pure, high-luminosity and high-diffusivity light sources that render colours with high visual uniformity.

**REAR PANEL**

Composite panel made up of two aluminium sheets with a polyethylene core.

**LIGHT SOURCE**

. LED Strip 120/m

. Colour temperature: 5500° K

. Rated output: 9.6W per metre

. Voltage: 240 V AC

. Side on/off switch

. Integrated transformer

The light source contained in this equipment may only be replaced by the manufacturer, its service department or equivalent qualified personnel.

Device for indoor use only, IP20

All products by Cantoni are made in Italy with carefully selected materials.

Each product is the result of a careful study to ensure the best balance between aesthetics and technology.  
The authenticity of each piece by Cantoni is ensured by our trademark.

We are always available to respond to every request and question about products.  
Our technical department is then available for custom projects

PLEASE NOTE:

Cantoni reserves the right to modify at any time the items in the catalogue for technical or commercial purposes.  
Shipments are made from our offices in San Marino

associated



**CANTONI TRADING SRL**

Headquarters and Showroom

Via Guardia di Rocca 10 - 47899 Galazzano - Rep. San Marino

Tel. +378 0549 977527 - Fax +378 0549 876501

[info@lineaunica.com](mailto:info@lineaunica.com)

[www.lineaunica.com](http://www.lineaunica.com)