









Luxury Lighted Mirrors

**UNICA**  
LUXURY LIGHTED MIRRORS  
*by Cantoni*

## **MF MIRROR COLLECTION**

	The Collection and the mission	3
	I-light	4
	MF Collection	5
	Standard dimensions	17
	Technical sheet	20
	Quality	23



## AND THERE WAS LIGHT. (BUT NOT A COMMON ONE)

The **light is perfect** if has the ability to create suggestions and wake up deep sensations. It is just this emotional light that is the **distinctive feature of Unica's complete range of lighted mirrors.**

Each mirror resulting from the Italian craftsmanship is a unique piece combining design, technological innovation and functionality harmoniously.

**Cantoni goal** is to support architects, interior designers and furniture companies in the creation of astonishing and highly functional bathrooms for luxury hotels, spa and residential facilities, thanks to mirrors subverting the usual rules and loosing their role of mere furnishings in order to become structural elements of space in which the light is the absolute protagonist...

## I-LIGHT: SYNTHESIS OF FUNCTIONALITY AND STYLE

The greatest ideas come from an endless passion and a patient and daily testing. That is why in Cantoni the contamination between design, research and experience has resulted in I-light technology.

**I-Light is a new lighting technology, Cantoni patented,** fully-integrated in the structure of every mirror of the Unica range and **recreating the colour rendering and the incidence of sunlight with absolute perfection.**

The light sources are **not light bulbs**, but lenses made of a highly-refractive, unbreakable material that are capable of spreading and shielding light in a perfectly even manner and completely enveloping the figure. Every single detail has been studied and analysed: from the distance between the light points to the uniformity of the light emission, paying the utmost care and attention to the **perfect colour gradation.**

Dimmable, low energy consumption, CE certified



### I-light:.

- . Shade of light: 4200°kelvin degree
- . Lights life: 100.000h/min.
- . Required bulbs: none
- . Universal Power socket: 110V-240V
- . Integrated actuator



## **MF mirror collection**

**Our wealth is knowing how to create luxury**

Design: **Cantoni**

Result of the perfect synergy between industrial design approach, care craftsmanship and creativity, the line of illuminated mirrors with MF frame is the modern concept of luxury, in a dance moving between the icy clarity of glass and the warmth of ancient and living materials, such as wood and leather.

Size, light, style and material:

**each mirror is a unique and customizable** piece produced by Italian craftsmen.

**See some creations in the following pages.**



## MF Mirror Line- Wood

Design: **Cantoni**

Renowned Italian artistic woodworking and advanced research light meet in the long history of Cantoni, creating a collection of unique mirrors, each one representing a sculpture with its own identity and character.

Size, light, style and material: each mirror is a unique and customizable piece produced by Italian craftsmen.



## MF - Argent Vague\*

Design: **Cantoni**

MF wall mirror with hand-decorated wood frame with silver leaf.

I-light integrated lighting technology.

Customised and on-demand production.

\*example of customised creation



- . Non-deformable internal structure
- . Personalised frame
- . Mirror resistant to corrosion (10X) and scratches (3X)
- . Safety film
- . Dimmable I-light lenses set into the mirror
- . Guaranteed lifetime hours 100,000/h
- . Integrated side actuator
- . 110-240V compatible
- . Low energy consumption
- . No photobiological risk
- . CE certification





**FURNISH THE BATHROOM**

Mirror 1850X1000 mm  
with wall frame 391A, AD finishes



## MF Wood Mirror - Baroque\*

Design: **Cantoni**

Wall mirror with I-light that diffuse illumination with adjustable intensity.

The mirror in this image, customizable as far as size and number of lights are concerned, is enclosed in a Baroque frame made of African acacia wood with gold leaf by Italian framers. Integrated light technology, side actuator.

\*example of customised creation



**FURNISH THE BEAUTY SPACES**

Mirror 1020x1800  
388A wood Frame with BPG finish

The most intimate, personal and ephemeral paintings: these sheets of mirroring glass, illuminated by opalescent lenses, full of sunlight, return our portrait as a work of art.



**FURNISH THE BOUTIQUE SPACES**

Mirror 1020x1800  
388A wood Frame with BPG finish



Standard dimensions on which the frame can be applied:

See dimensions page 17

- . Customised and on-demand production
  - . Cornice in legno in diverse finiture disponibile in
  - . Wooden frame in different finishes available in
- Baroque style  
Contemporary style  
Classic style  
(see pag. 12)





Frame 110P  
NOPA  
Matt Black - Open Pore



Frame 193  
BV  
Venetian White



Frame 388A  
OE  
Vintage gold



Frame 210P  
BPG  
White veneer Grey



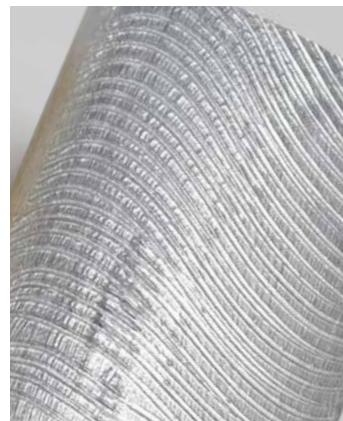
Frame 457  
AE  
Gold Leaf Vintage



Frame 406L  
AD  
Pickled Ivory



Frame 391A  
STOE  
Vintage Gold Leaf  
Stucco Tampone



Frame 391A  
SOA  
Silver Stucco Onde



. Artisanal wooden frames of various types and finishes.  
The samples shown are just some of the options available.  
Standard sizes available to which frames are applied: ref. pag.17  
. Max. 30 light points can be installed per mirror

Cantoni will assess feasibility, methods, costs and times for the customisation of products on a case-by-case basis.





## MF - Leather

Design: **Cantoni**

Touch sensitive and gazing when looking at it, leather gives the mirrors of the MF line an antique flavour luxury .  
The reflection of I-lights plays with the leather texture, materializing in these objects the concept of contemporary luxury.

The leather is shaped, cut and applied onto the frame by hand and then sewn by Italian skilled leather craftsmen.

## MF Leather mirror Collection

Design: **Cantoni**

Wall and stand-alone mirrors\* with I-lights and adjustable intensity. Each element can be customized by size, number of lights, shape and colour of the frame. The leather is shaped, cut, applied and hand sewn by Italian skilled leather craftsmen. Built-in light technology, side actuator.

\*example of customised creation



- . Non-deformable internal structure
- . Personalised frame
- . Mirror resistant to corrosion (10X) and scratches (3X)
- . Safety film
- . Dimmable I-light lenses set into the mirror
- . Integrated side-mounted actuator
- . Guaranteed lifetime hours 100,000/h
- . 110-240V compatible
- . Low energy consumption
- . No photobiological risk
- . CE certification



**FURNISH THE BEDROOMS**

Mirror 1020X1800 mm  
391A frame covered with Prestige pleather

When the wonder of lights combines with the incorporeal materiality of the mirror and with the leather sensuality light sculptures come to life, fitting stylishly in any space and telling its story..



Standard dimensions on which the frame can be applied: see dimensions page 17





Frame 391A  
115x66h mm



Frame 356A  
110x93h mm

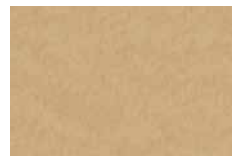
*Prestige Lunaire range of pleathers*



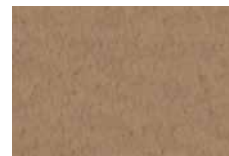
P12063



P12065



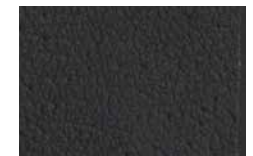
P12066



P12064

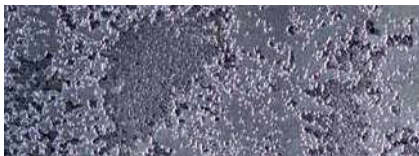


P12067



P99

*Lunaire range of pleathers*



Lunaire Silver 11034



Lunaire Black 11044



Lunaire Gold 11153



Lunaire Rame 11171



.Standard dimensions on which the imitation leather covered frame can be applied:

see dimensions page 17

. Max. 30 light points

Cantoni will assess feasibility, methods, costs and times for the customisation of products on a case-by-case basis..



MADE IN ITALY  
PVC completely free  
from phthalates.



# STANDARD DIMENSIONS

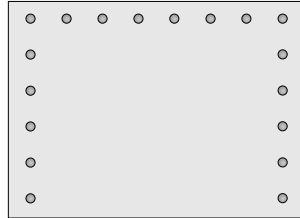
Unica | Linea MF

---

1020X700mm



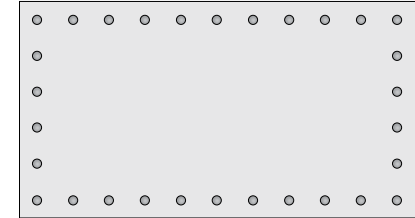
1400X1020 mm



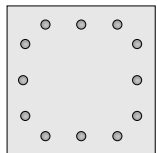
700X1020 mm



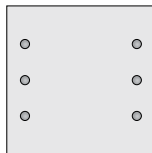
1020X1020 mm



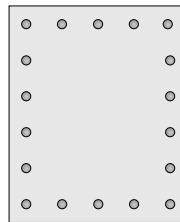
700X700 mm



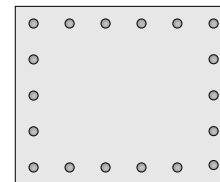
700X700 mm



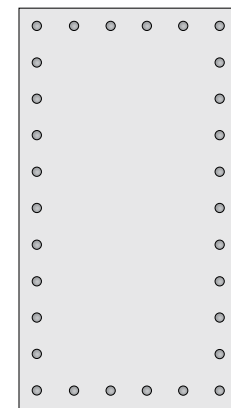
840X1020 mm



1020X840 mm



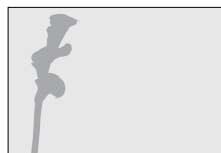
1020x1865mm



1020X700 mm

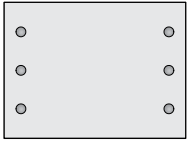


1020X700mm



. Min size 410 mm  
 . Max size 1850 mm

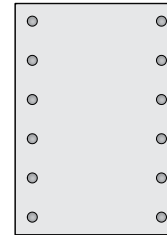
800X600mm



1020X700 mm



700X1020mm



1020X1800 mm



. Min size 410 mm  
. Max size 1850 mm

# TECHNICAL SHEET

Unica | MF Line

---





**FRAME STRUCTURE**

6060-T5 non-deformable aluminium

- . Minimum dimension 410 mm
- . Maximum dimension 1850 mm

**MIRRORS**

High-tech, 4 mm thick mirrors  
 Ten times more resistant to corrosion  
 Three times more resistant to scratches compared to conventional mirrors.  
 Long lasting in typically damp environments  
 Safety Film

**I-LIGHT TECHNOLOGY (patented)**

The light lenses, set directly into the reflective surface, cut with high-precision instruments, diffuse light generated by I-Light technology incorporated into the structure of the mirror.



Each I-LIGHT module is composed of three light lenses.  
 Each mirror has at least six lenses, composed of two I-LIGHT modules with three light lenses each. Up to thirty lenses can be fitted, composed of ten I-LIGHT modules with three light lenses each.

Light gradation 4200° kelvin  
 Guaranteed life cycle: 100,000/h  
 Low energy consumption  
 Photobiological hazard: none

Actuator:  
 Quick touch = on/off the light  
 Press and hold = brightness +/-



Natural light  
4200° Kelvin



Light  
adjustment



No bulbs  
required



Input  
110-240 V



Safety  
Film



Low energy  
consumption



CE  
conformity



## TECHNICAL SPECIFICATIONS FOR THE DEVICE

TYPE::	Mirror with 6 light points	Mirror with 9 light points	Mirror with 12 light points	Mirror with 18 light points	Mirror with 21 light points	Mirror with 24 light points	Mirror with 30 light points
VOLTAGE:	110/240 Vac 50/60 Hz	110/240 Vac 50/60 Hz	110/240 Vac 50/60 Hz	110/240 Vac 50/60 Hz	110/240 Vac 50/60 Hz	110/240 Vac 50/60 Hz	110/240 Vac 50/60 Hz
CURRENT:	106 mA max	159 mA max	212 mA max	318 mA max	370 mA max	424 mA max	560 mA max
POWER:	25 W max	38 W max	50 W max	75 W max	88 W max	100 W max	125 W max
POWER FACTOR 240Vac, 60Hz:	Cosφ = 0,95	Cosφ = 0,95	Cosφ = 0,95	Cosφ = 0,95	Cosφ = 0,95	Cosφ = 0,95	Cosφ = 0,95

The light source contained in this equipment may only be replaced by the manufacturer , its service department or equivalent qualified personnel.

Device for indoor use only , IP20

The device is designed to operate within a temperature range of 0-40°C (Ta)

The electrical output cable of the mirror is not equipped with the plug: it needs to be connected to the electrical wiring of the room.

## LED CHARACTERISTICS:

- Brand of origin: CANTONI TRADING SRL
- Model: module Led
- Power voltage and tension: 28.3 Vdc, 0.325A
- Total nominal power: 9.2 W
- Position and purpose of the connections: on the LED module
- tc: 55 ° C
- Photobiological hazard: none

**CE conformity declaration**

Complies with the essential requirements of EU directives applicable to the product: Low Voltage Directive 2014/35/EU, Electromagnetic Compatibility Directive 2014/30/EU and ROHS Directive 2011/65/EU, when installed in compliance with these instructions..

All products by Cantoni are made in Italy with carefully selected materials.

Each product is the result of a careful study to ensure the best balance between aesthetics and technology.  
The authenticity of each piece by Cantoni is ensured by our trademark.

We are always available to respond to every request and question about products.  
Our technical department is then available for custom projects

PLEASE NOTE:

Cantoni reserves the right to modify at any time the items in the catalogue for technical or commercial purposes.  
Shipments are made from our offices in San Marino

associated



**CANTONI TRADING SRL**

Headquarters and Showroom

Via Guardia di Rocca 10 - 47899 Galazzano - Rep. San Marino

Tel. +378 0549 977527 - Fax +378 0549 876501

[info@lineaunica.com](mailto:info@lineaunica.com)

[www.lineaunica.com](http://www.lineaunica.com)