











Luxury Lighted Mirrors

**UNICA**  
LUXURY LIGHTED MIRRORS  
*by Cantoni*

## MIRROR COLLECTION

	The Collection and the mission	3
	I-light	4
	MH Collection	5
	MDE Collection	11
	SP Collection	17
	MF Collection	23
	Technical sheet	37
	Quality	40

## AND THERE WAS LIGHT. (BUT NOT A COMMON ONE)

The **light is perfect** if has the ability to create suggestions and wake up deep sensations. It is just this emotional light that is the **distinctive feature of Unica's complete range of lighted mirrors**.

Each mirror resulting from the Italian craftsmanship is a unique piece combining design, technological innovation and functionality harmoniously.

**Cantoni goal** is to support architects, interior designers and furniture companies in the creation of astonishing and highly functional bathrooms for luxury hotels, spa and residential facilities, thanks to mirrors subverting the usual rules and loosing their role of mere furnishings in order to become structural elements of space in which the light is the absolute protagonist.

## I-LIGHT: SYNTHESIS OF FUNCTIONALITY AND STYLE

The greatest ideas come from an endless passion and a patient and daily testing. That is why in Cantoni the contamination between design, research and experience has resulted in I-light technology.

**I-Light is a new lighting technology, Cantoni patented,** fully-integrated in the structure of every mirror of the Unica range and **recreating the colour rendering and the incidence of sunlight with absolute perfection.**

The light sources are **not light bulbs**, but lenses made of a highly-refractive, unbreakable material that are capable of spreading and shielding light in a perfectly even manner and completely enveloping the figure. Every single detail has been studied and analysed: from the distance between the light points to the uniformity of the light emission, paying the utmost care and attention to the **perfect colour gradation.**

Dimmable, low energy consumption, CE certified

### I-light:.

- . Shade of light: 4200°kelvin degree
- . Lights life: 100.000h/min.
- . Required bulbs: none
- . Universal Power socket: 110V-240V
- . Integrated actuator

## MH mirror collection

**You flood me with light of the immense.**

Design: **Cantoni**

The application of an aesthetic concept developed around a particular constructive curved geometry to the intrinsic strength of the aluminium gives lightness and movement to the glass. A stylistically-impeccable formal research wisely mixes elements of classicism and modernity to create refined spaces that are surprising but comfortable.

The opal lens, directly embedded into the reflecting surface and carved with high-precision instruments, spread the light created by the I-light integrated technology (Brightness 4200° K) in a thickness of only 2.55 inches (6.5 cm).

## MH range of mirrors

Design: **Cantoni**

The MH range comprehends mirror with direct and indirect lighting in silvered-back float glass enclosed in an anodised aluminium frame with convex profile capable of spreading the emission of RGB backlight folding away the inner profile with a 180° range.



- . 65 mm frame in anodized aluminium
- . Mirror resistant to corrosion (10X) and scratches (3X)
- . Mirror thickness 4mm
- . Safety film
- . I-light dimmable light lenses
- . Kelvin: 4200°
- . Guaranteed lifetime hours 100,000/h
- . Integrated side actuator
- . 110-240V compatible
- . RF control of RGB backlighting
- . Low energy consumption  
(Energy consumption and technical details: pag.37)
- . No photobiological risk
- . CE certification

MH01XL 1400X1020 mm



MH05 1020X1800 mm

These objects with a refined design are real sculptures that catch the eyes and blend in any space, embellishing it with reflections.





MH01XL 1400X1020 mm



- . 13 Standard sizes (see pag. 9).
- . Models with freestanding supports are also available
- . Made-to-measure also available
- . Min. size 700mm
- . Max. size 1850mm
- . Max. 30 I-light lighting sources



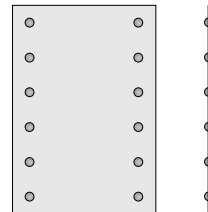
MH01  
1020X700x65 mm



MH01XL  
1400X1020x65 mm



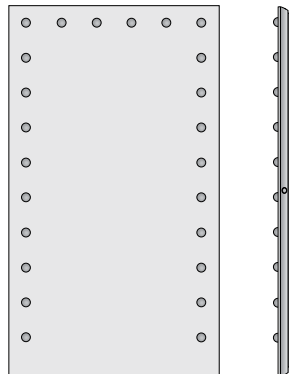
MH03  
700X1020x65 mm



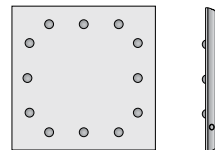
MH04  
1020X1020x65 mm



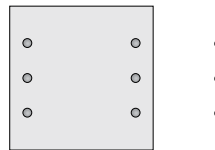
MH05  
1020X1800x65 mm



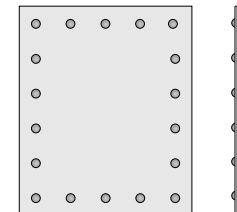
MH06  
700X700x65 mm



MH07  
700X700x65 mm



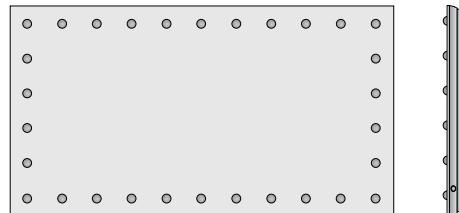
MH08.V  
840X1020x65 mm



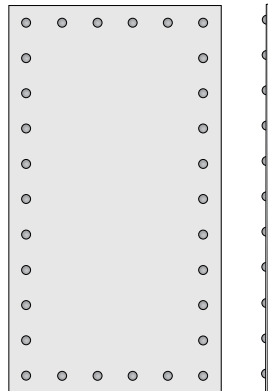
MH08.O  
1020X840x65 mm



MH09.O  
1865X1020x65 mm



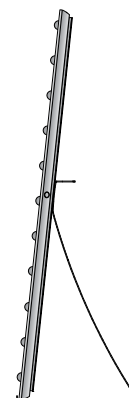
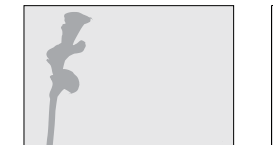
MH09.V  
1020x1865x65 mm



MH10  
1020X700x65 mm



MH11  
1020X700x65 mm



MH09. STAND ALONE  
1020X1865X620 mm



- . Min. size 700mm
- . Max. size 1850mm
- . Max. 30 I-light lighting sources

**Standard Anodized Finish**

ACH

Matt chemical silver

**Non-standard anodized finishes**

	Bright Silver	Light Smoky Grey	Dark Smoky Grey	Light Gold	Medium Gold	Light Bronze	Electro-colour Bronze	Medium Bronze	Dark Bronze	Black
Polished										
	ABL	FCL	FSL	OCL	OML	BCL	BEL	BML	BSL	NL
Satin										
	ABS	FCS	FSS	OCS	OMS	BCS	BES	BMS	BSS	NS
Brushed										
	ABB	FCB	FSB	OCB	OMB	BCB	BEB		BSB	NB
Matt chemical										
		FCC	FSC	FSC	OMC	BCC	BEC	BMC	BSC	NC

**Non-standard paint finishes**

Matt or glossy paint  
(Ref. RAL range of colours)

Cantoni will assess feasibility, methods, costs and times for the customisation of products on a case-by-case basis.



## **MDE mirror collection**

### **It's amazing what the right light can do**

Design: **Cantoni**

The aery surface of the mirror welcomes, in a precious setting, the curved profile of opalescent lenses, replicating with absolute perfection the chromatic shade of the sunlight.

A collection encasing, in its apparently simple lines, countless hours of study and research on the refraction of light.

MDE mirror line is successfull sythesis of functionality,advanced technology and a kind of sensual Hollywood appeal.

## MDE mirror collection

Design: **Cantoni**

The MDE range is composed of wall mirrors with I-light diffused lighting in silver-backed float glass with 4 cm (1,5 inch) silver anodised aluminium linear profile and adjustable light intensity.



- . 40 mm frame in anodized aluminium
- . Mirror resistant to corrosion (10X) and scratches (3X)
- . Mirror thickness 4mm
- . Safety film
- . I-light dimmable light lenses
- . Kelvin: 4200°
- . Guaranteed lifetime hours 100,000/h
- . Integrated side actuator
- . 110-240V compatible
- . Low energy consumption  
(Energy consumption and technical details: pag.37)
- . No photobiological risk
- . CE certification

MDE505 700X1020 mm



MDE505 stand-alone 700X1020 mm - chair Astrea

These mirror modules with simple and essential lines, designed for directional furnishing, thanks to low power consumption, simplicity of installation and absolute absence of heat emission, create suggestive and highly-functional corners in commercial spaces, hair styling salons, pharmacies and optician's shops.



MDE505 700X1020 mm

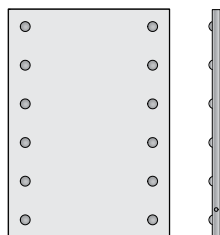


- . Standard sizes (see pag. 15)
- . Made-to-measure and made-to-order products too
- . Min. size 410mm
- . Max. size 1850mm
- . Max. 30 I-light lighting sources
- . Side-by-side modular elements
- . Customisable with customer logo
- . Also available modules without lights
- . Also available as compact table mirror (2 sizes)

MDE502  
1020X700x40 mm



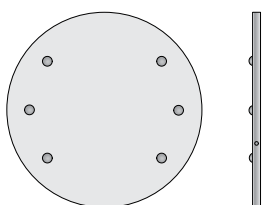
MDE505  
700X1020x40 mm



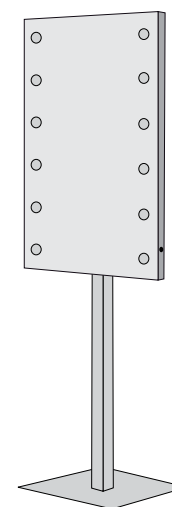
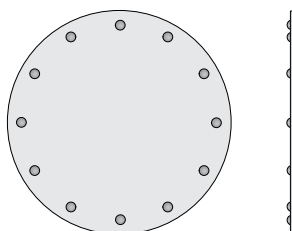
MDE516  
1020X1800x40 mm



MDE80  
Diam. 800x44 mm



MDE100  
Diam. 1000x44 mm



MDE505 stand alone  
700x1020x40 mm  
Reed h 1850



- . Min. size 410mm
- . Max. size 1850mm
- . Max. 30 I-light lighting sources





**Standard Anodized Finish (\*)**

ACH

Matt chemical silver

**Non-standard paint finishes**



Matt or glossy paint (ref. RAL  
range of colours)



Gold

\* Non-standard and not available for MDE100 and MDE80

Cantoni will assess feasibility, methods, costs and times for the customisation of products on a case-by-case basis.t.



## **SP mirror collection**

### **Shape, content and function**

Design: **Cantoni**

The materialization of a thought combining textural geometries with ethereal transparencies: the SP line of mirrors is the point of arrival of a conceptual and sensory journey that winds through metals, reflections, lights, volumes and technology.

A line that comes from a creative experience at the service of real people, objects designed for living environments and making the most of this time.

The ideal light reception on the face is guaranteed by the 5° splaying of the frames. The opal lenses diffusing the I-light light enrich with reflections the polished geometric surfaces of the frame in aluminium.

## SP mirror collection

Design: **Cantoni**

Wall mirror with I-light diffused illumination adjustable in intensity. 5° splayed frame in painted or chromed anodised aluminium, 55 mm thickness. Spherical opal lenses are inserted with millimetre precision in the shaped notches on the frame.



- . Bevelled frame in anodized aluminium
- . Mirror resistant to corrosion (10X) and scratches (3X)
- . Mirror thickness 4mm
- . Safety film
- . I-light dimmable light lenses
- . Kelvin: 4200°
- . Guaranteed lifetime hours 100,000/h
- . Integrated side actuator
- . 110-240V compatible
- . Low energy consumption
- (Energy consumption and technical details: pag.37)
- . No photobiological risk
- . CE certification

SP301 Glossy Bright Silver 800X1200 mm



SP301 Glossy Bright Silver 800X1200 mm

An amazing collection of mirrors of authentic design, where the shape, playing with transparencies and perspectives, acquires relevance and thickness in combination with an advanced technology, in order to be inserted in a functional and flexible way in real and liveable spaces.

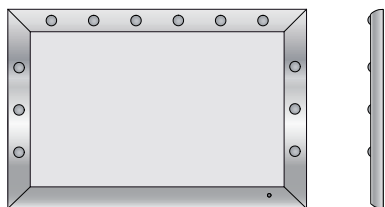


SP302 Glossy Bright Silver 1000x1800 mm

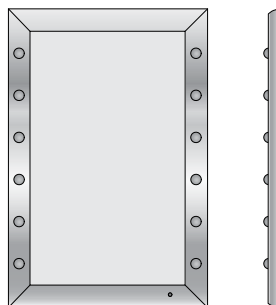


- . 3 Standard sizes (see pag. 21)
- . Min. size 600 mm
- . Max. size 1850 mm
- . Max. 30 I-light lighting sources
- . Possible customised production
- . Customisable with customer's logo

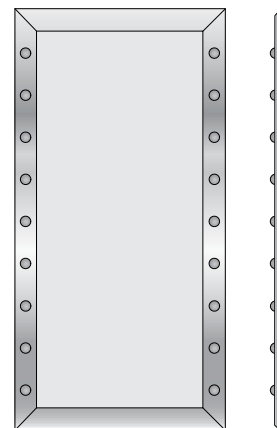
SP300  
1200X800x55 mm



SP301  
800X1200x55 mm



SP302  
1000X1800x55 mm



- . Min. size 600 mm
- . Max. size 1850 mm
- . Max. 30 I-light lighting sources



**Standard Anodized Finish**

ABL

Polished bright silver

**Non-standard anodized finishes**

	Bright Silver	Light Smoky Grey	Dark Smoky Grey	Light Gold	Medium Gold	Light Bronze	Electro-colour Bronze	Medium Bronze	Dark Bronze	Black
Polished										
		FCL	FSL	OCL	OML	BCL	BEL	BML	BSL	NL
Satin										
	ABS	FCS	FSS	OCS	OMS	BCS	BES	BMS	BSS	NS
Brushed										
	ABB	FCB	FSB	OCB	OMB	BCB	BEB		BSB	NB
Matt chemical										
	ACH	FCC	FSC	FSC	OMC	BCC	BEC	BMC	BSC	NC

**Non-standard paint finishes**

Matt or glossy paint  
(ref. RAL range of colours)

Cantoni will assess feasibility, methods, costs and times for the customisation of products on a case-by-case basis.



## MF mirror collection

**Our wealth is knowing how to create luxury**

Design: **Cantoni**

Result of the perfect synergy between industrial design approach, care craftsmanship and creativity, the line of illuminated mirrors with MF frame is the modern concept of luxury, in a dance moving between the icy clarity of glass and the warmth of ancient and living materials, such as wood and leather.

Size, light, style and material: **each mirror is a unique and customizable piece produced by Italian craftsmen.**

**See some creations in the following pages.**



## MF Mirror Line- Wood

Design: **Cantoni**

Renowned Italian artistic woodworking and advanced research light meet in the long history of Cantoni, creating a collection of unique mirrors, each one representing a sculpture with its own identity and character.

Size, light, style and material: each mirror is a unique and customizable piece produced by Italian craftsmen.



Mirror 1020x700 mm  
Wood frame 391A SOA finish Silver Stucco Onde\*

## MF - Argent Vague\*

Design: **Cantoni**

MF wall mirror with hand-decorated wood frame with silver leaf.

I-light integrated lighting technology.

Customised and on-demand production.

\*example of customised creation



- . Internal structure in non-deformable aluminium
- . Personalised frame
- . Mirror resistant to corrosion (10X) and scratches (3X)
- . Mirror thickness 4mm
- . Safety film
- . I-light dimmable light lenses
- . Kelvin: 4200°
- . Guaranteed lifetime hours 100,000/h
- . Integrated side actuator
- . 110-240V compatible
- . Low energy consumption  
(Energy consumption and technical details: pag.37)
- . No photobiological risk
- . CE certification



## MF - Baroque\*

Design: **Cantoni**

Wall mirror with I-light that diffuse illumination with adjustable intensity. The mirror in this image, customizable as far as size and number of lights are concerned, is enclosed in a Baroque frame made of African acacia wood with gold leaf by Italian framers. Integrated light technology, side actuator.

\*example of customised creation



Mirror 700X1020 mm  
Wood frame 193 finish AE Vintage Silver\*



Mirror 700X1020 mm  
Wood frame 193 finish OE Vintage Gold

The most intimate, personal and ephemeral paintings: these sheets of mirroring glass, illuminated by opalescent lenses, full of sunlight, return our portrait as a work of art.



Mirror 1020x1800 mm  
Wood frame 388A finish BPG White veneer Grey



- Standard sizes for the framed mirror: see standard sizes pag. 35-36
- . Customised and on-demand production
  - . Wooden frame with various finishes (p. 29)





Frame 110P  
NOPA  
Matt Black - Open Pore



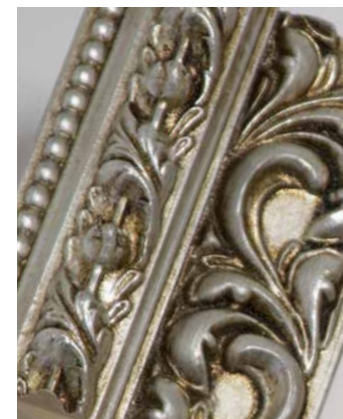
Frame 193  
BV  
Venetian White



Frame 388A  
OE  
Vintage gold



Frame 210P  
BPG  
White veneer Grey



Frame 457  
AE  
Gold Leaf Vintage



Frame 406L  
AD  
Pickled Ivory



Frame 391A  
STOE  
Vintage Gold Leaf  
Stucco Tampone



Frame 391A  
SOA  
Silver Stucco Onde



. Artisanal wooden frames of various types and finishes.  
The samples shown are just some of the options available.  
Standard sizes available to which frames are applied:  
Ref. pag.35-36  
. Max. 30 light points can be installed per mirror

Cantoni will assess feasibility, methods, costs and times for the customisation of products on a case-by-case basis.





## MF Mirror Line- Leather

Design: **Cantoni**

Touch sensitive and gazing when looking at it, leather gives the mirrors of the MF line an antique flavour luxury .

The reflection of I-lights plays with the leather texture, materializing in these objects the concept of contemporary luxury.

The leather is shaped, cut and applied onto the frame by hand and then sewn by Italian skilled leather craftsmen.

## MF Line

Design: **Cantoni**

Wall and stand-alone mirrors with I-lights and adjustable intensity. Each element can be customized by size, number of lights, shape and colour of the frame. The leather is shaped, cut, applied and hand sewn by Italian skilled leather craftsmen. Built-in light technology, side actuator.

\*example of customised creation



- . Non-deformable internal structure
- . Mirror resistant to corrosion (10X) and scratches (3X)
- . Safety film
- . Dimmable I-light lenses set into the mirror.
- . Integrated side-mounted actuator
- . Kelvin: 4200°
- . 110-240V compatible
- . Low energy consumption (pag.37)
- . No photobiological risk
- . CE certification

Mirror 1020x1800 mm  
356 frame covered with Prestige pleather\*



Mirror 700x1020 mm  
356 frame covered with Lunaire Rame pleather\*

When the wonder of lights combines with the incorporeal materiality of the mirror and with the leather sensuality light sculptures come to life, fitting stylishly in any space and telling its story.

\*example of customised creation





Mirror 1020x1800 mm  
391A frame covered with Prestige pleather



- .Standard dimensions on which the frame can be applied:  
see dimensions pag.35-36
- . Made-to-measure also available
- . Frames upholstered in imitation leather in different  
textures and colours (pag. 34)

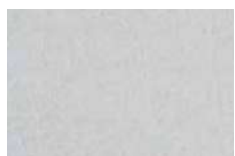


Frame 391A  
115x66h mm



Frame 356A  
110x93h mm

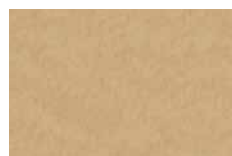
*Prestige Lunaire range of pleathers*



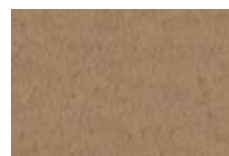
P12063



P12065



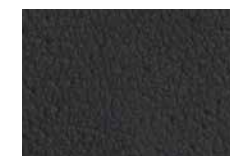
P12066



P12064

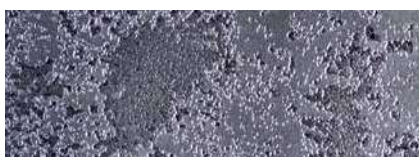


P12067



P99

*Lunaire range of pleathers*



Lunaire Silver 11034



Lunaire Black 11044



Lunaire Gold 11153



Lunaire Rame 11171



. Standard sizes for the framed mirror: see standard sizes pag.35-36

. Max. 30 light points

Cantoni will assess feasibility, methods, costs and times for the customisation of products on a case-by-case basis.

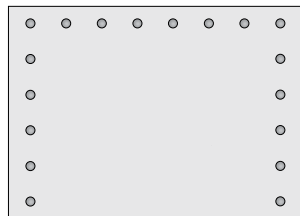


MADE IN ITALY  
PVC completely free  
from phthalates.

1020X700mm



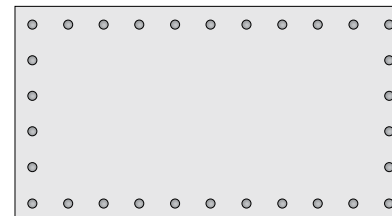
1400X1020 mm



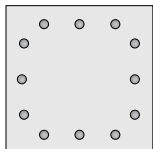
700X1020 mm



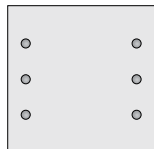
1020X1020 mm



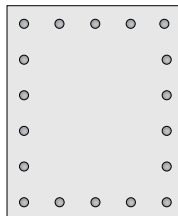
700X700 mm



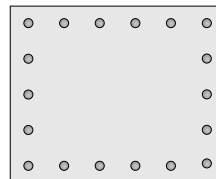
700X700 mm



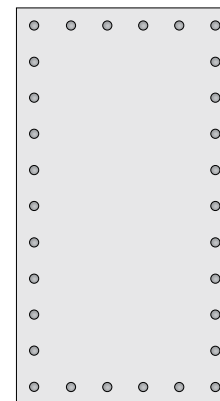
840X1020 mm



1020X840 mm



1020x1865mm



1020X700 mm



1020X700mm



. Min. size 410 mm

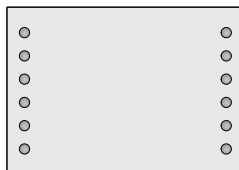
. Max. size 1850 mm

. Max. 30 I-light lighting sources

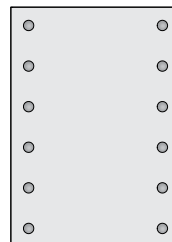
800X600 mm



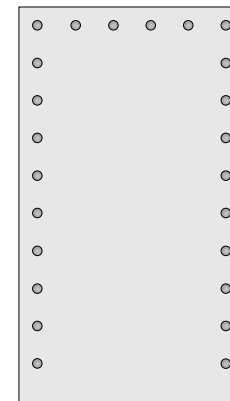
1020X700 mm



700X1020 mm



1020X1800 mm



. Min. size 410mm

. Max. size 1850mm

. Max. 30 I-light lighting sources



# TECHNICAL SHEET

---

**STRUCTURE**

6060-T5 non-deformable aluminium

**MIRRORS**

High-tech, 4 mm thick mirrors

Ten times more resistant to corrosion

Three times more resistant to scratches compared to conventional mirrors

Does not contain copper or formaldehyde and complies with the criteria set forth in the European RoHS Directive (< 0.1% of lead)

Long-lasting in typically damp environments

Safety Film

**I-LIGHT TECHNOLOGY (patented)**

The light lenses, set directly into the reflective surface, cut with high-precision instruments, diffuse light generated by I-Light technology incorporated into the structure of the mirror.



Each I-LIGHT module is composed of three light lenses.

Each mirror has at least six lenses, composed of two I-LIGHT modules with three light lenses each. Up to thirty lenses can be fitted, composed of ten I-LIGHT modules with three light lenses each.

Light gradation 4200° kelvin

Guaranteed life cycle: 100,000/h

Low energy consumption

Photobiological hazard: none

Actuator:

Quick touch = on/off the light

Press and hold = brightness +/-



Natural light  
4200° Kelvin



Light  
adjustment



No bulbs  
required



Input  
110-240 V



Safety  
Film



Low energy  
consumption



CE  
conformity

## TECHNICAL SPECIFICATIONS FOR THE DEVICE

TYPE:	Mirror with 6 light points	Mirror with 9 light points	Mirror with 12 light points	Mirror with 18 light points	Mirror with 21 light points	Mirror with 24 light points	Mirror with 30 light points
VOLTAGE:	110-240 Vac 50/60 Hz	110-240 Vac 50/60 Hz	110-240 Vac 50/60 Hz	110-240 Vac 50/60 Hz	110-240 Vac 50/60 Hz	110-240 Vac 50/60 Hz	110-240 Vac 50/60 Hz
CURRENT without RGB	106 mA max	159 mA max	212 mA max	318 mA max	370 mA max	424 mA max	560 mA max
POWER without RGB	25 W max	38 W max	50 W max	75 W max	88 W max	100 W max	125 W max
POWER and CURRENT with RGB module:	53 W 148 mA	66 W 222 mA	86 W 295 mA	122 W 443 mA	RGB non presente	164 W 590 mA	174,3 W 780 mA
POWER FACTOR 240Vac, 60Hz:	Cosφ = 0,95	Cosφ = 0,95	Cosφ = 0,95	Cosφ = 0,95	Cosφ = 0,95	Cosφ = 0,95	Cosφ = 0,95

The light source contained in this equipment may only be replaced by the manufacturer , its service department or equivalent qualified personnel.

Device for indoor use only , IP20

The device is designed to operate within a temperature range of 0-40°C (Ta)

The electrical output cable of the mirror is not equipped with the plug: it needs to be connected to the electrical wiring of the room.

## LED CHARACTERISTICS:

- Brand of origin: CANTONI TRADING SRL
- Model: module Led
- Power voltage and tension: 28.3 Vdc, 0.325A
- Total nominal power: 9.2 W
- Position and purpose of the connections: on the LED module
- tc: 55 ° C
- Photobiological hazard: none

## MH LINE:

Backlight RGB: RGB controller - wireless RF remote control

. Power voltage and tension: 12 Vdc, 1.2 A

. Total nominal power: 14,4 W/1 mt

. tc: 60 ° C

. Photobiological hazard: none



## CE conformity declaration

Complies with the essential requirements of EU directives applicable to the product: Low Voltage Directive 2014/35/EU, Electromagnetic Compatibility Directive 2014/30/EU and ROHS Directive 2011/65/EU, when installed in compliance with these instructions..

All products by Cantoni are made in Italy with carefully selected materials.

Each product is the result of a careful study to ensure the best balance between aesthetics and technology.  
The authenticity of each piece by Cantoni is ensured by our trademark.

We are always available to respond to every request and question about products.  
Our technical department is then available for custom projects

PLEASE NOTE:

Cantoni reserves the right to modify at any time the items in the catalogue for technical or commercial purposes.  
Shipments are made from our offices in San Marino

associated



**CANTONI TRADING SRL**

Headquarters and Showroom

Via Guardia di Rocca 10 - 47899 Galazzano - Rep. San Marino

Tel. +378 0549 977527 - Fax +378 0549 876501

[info@lineaunica.com](mailto:info@lineaunica.com)

[www.lineaunica.com](http://www.lineaunica.com)