

**UNICA**  
LUXURY LIGHTED MIRRORS  
*by Cantoni*

## **MDE CONTRACT**

A **lighted mirror** is a central element in a **bathroom**



	<b>The Collection and the mission</b>	3
	<b>I-light</b>	5
	<b>MDE Collection</b>	6
	<b>Standard dimensions</b>	9
	<b>Technical sheet</b>	12
	<b>Quality</b>	15



## Decorate with **light**, between **energy savings** and **design**

The tendency of the hotel world is to give maximum value for bathroom furnishings as a true space of luxury and relaxation pointing to maximum comfort.

A large room aesthetically nice and above all bright: it is light the element that really makes the difference in the hotel bathroom, where the guest spends a lot of time in front of the mirror to devote yourself to self-care.



## AND THERE WAS LIGHT. (but not a common one)

The perfect light can create suggestions and give rise to deep feelings. It's this emotional light to be the distinctive feature of Unica, a complete range of illuminated mirrors staging the full expressive force of contemporary luxury.

Each mirror resulting from the Italian craftsmanship is a unique piece combining design, technological innovation and functionality harmoniously.

**Cantoni** is a production company based in San Marino with twenty years of experience. The Cantoni company is composed of the **Professional division** and the **Luxury division**. Its range of illuminated mirrors and backlit panels, one of the largest ranges in Europe, conveys the full expressive power of contemporary luxury that is typical of the Italian lifestyle. Thanks to its **dynamism and design flexibility**, in addition to the wide range of backlit mirrors and panels contained in the catalogue, Cantoni is also able to develop customised products, working proactively with architectural and interior design studios involved in contract furniture projects.

**I-light system in numbers:**

- . Shade of light: 4200°kelvin degree
- . Lights life: 100.000h/min.
- . Power Consumption: 4Watt/h/ light point
- . Required bulbs: none
- . Universal Power socket: 110V-240V

**I-LIGHT:**

a combination of function and style

The greatest ideas come from an endless passion and a patient and daily testing. That is why in Cantoni the contamination between design, research and experience has resulted in I-light technology.

**I-Light is a new lighting technology, Cantoni patented,**

fully-integrated in the structure of every mirror of the Unica range and recreating the colour rendering and the incidence of sunlight with absolute perfection.

The light sources are **not light bulbs**, but lenses made of a highly-refractive, unbreakable material that are capable of spreading and shielding light in a perfectly even manner and completely enveloping the figure.

Every single detail has been studied and analysed: from the distance between the light points to the uniformity of the light emission, paying the utmost care and attention to the **perfect colour gradation.**

It does not generate heat, it does not bother the eyes, it wraps the face with a perfect color rendering

Dimmable, low energy consumption, CE certified.



The others make mirrors,  
we design avant-garde.

The Cantoni company is composed of the Professional division and the Luxury division. Thanks to its dynamism and design flexibility, in addition to the wide range of mirrors and panels contained in the catalogue, Cantoni is also able to develop customised products, working proactively with architectural and interior design studios involved in contract furniture projects.

## Essenziali ed Eleganti

MDE-CONTRACT is a range of mirrors with lights, an aery, edge-to-edge design collection **encasing a precious**, sunlike lighting system. This high quality lighted mirror collection has been purposely created to satisfy the companies involved in the contract furniture management.

The fitting, simple solution for hotel, spa, retail areas.

MDE mirror line is successfull sythesis of functionality,advanced technology and a kind of sensual Hollywood appeal.

## CONTRACT MDE

Design: **Cantoni**

- . Easy set-up
- . High functionality
- . No maintenance needed
- . Low Energy consumption
- . Sunlike lighting system
- . I-light technology
- . Undeformable structure
- . Mirror resistant to corrosion
- . No photobiological risk and CE certification
- . Wide range of standard sizes
- . Made in Italy raw materials and production



### Standard Anodized Finish

ACH

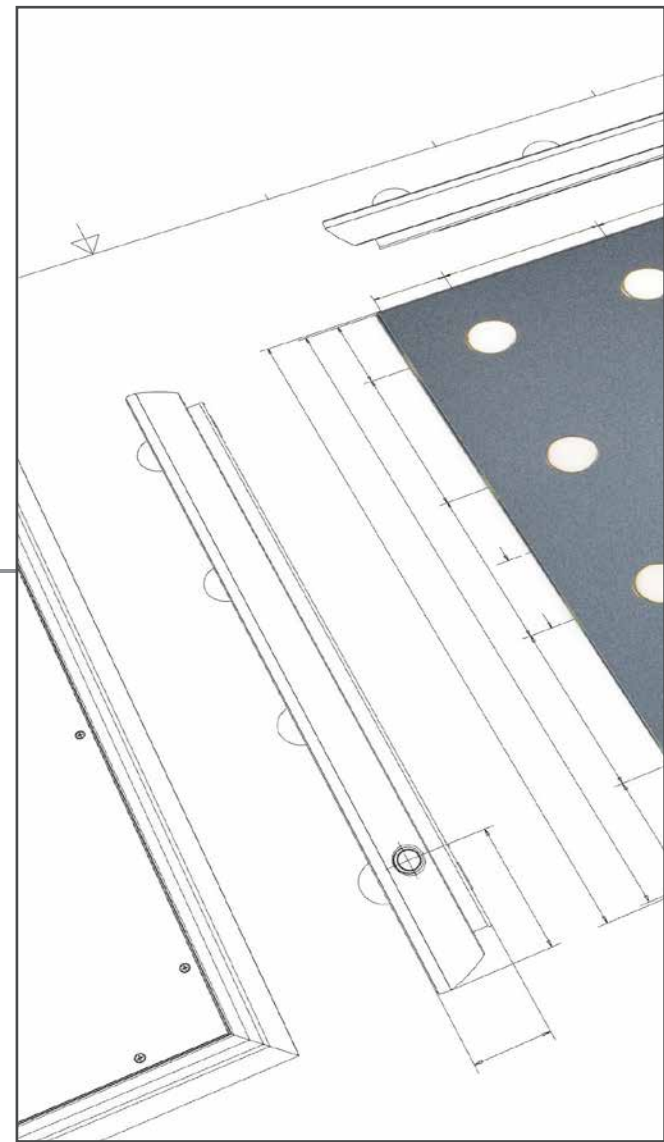
Matt chemical silver

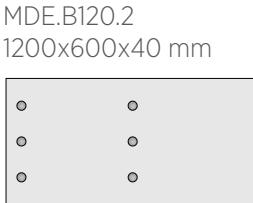
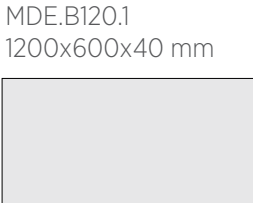
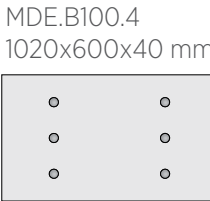
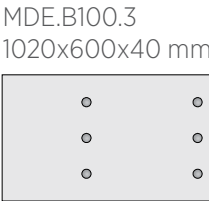
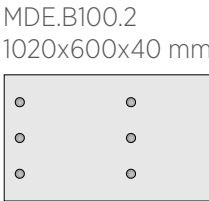
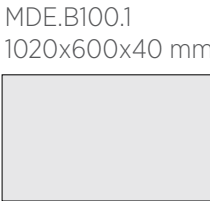
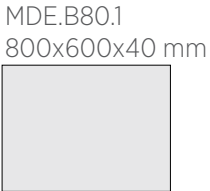




# STANDARD DIMENSIONS

## MDE CONTRACT





MDE.B140.1  
1400x600x40 mm



MDE.B140.1  
1400x600x40 mm



MDE.B140.1  
1400x600x40 mm



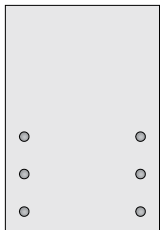
MDE.B140.1  
1400x600x40 mm



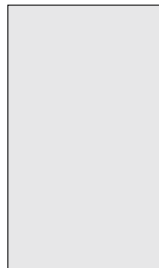
MDE.B70.1  
700x1020x40 mm



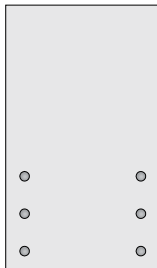
MDE.B70.2\*  
700x1020x40 mm



MDE.B70.3  
700x1200x40 mm



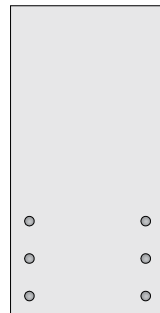
MDE.B70.4\*  
700x1200x40 mm



MDE.B70.5  
700x1400x40 mm



MDE.B70.6\*  
700x1400x40 mm

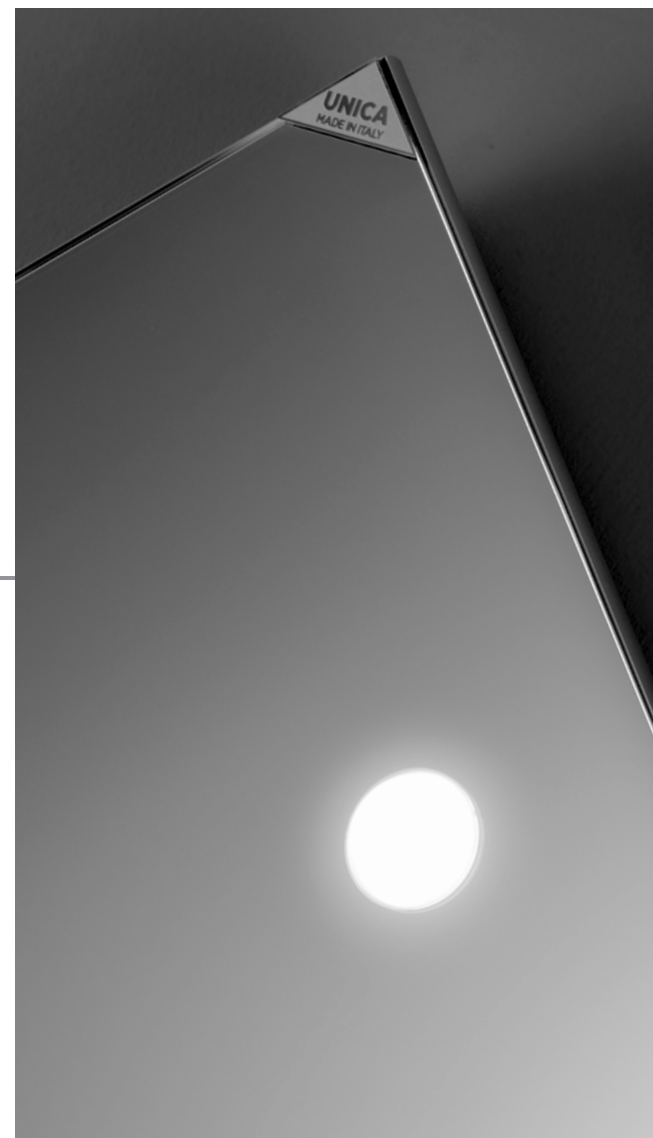


\*For this model IT IS POSSIBLE to modify the arrangement of the light points according to the required needs

Cantoni will assess feasibility, methods, costs and times for the customisation of products on a case-by-case basis

# TECHNICAL SHEET

## MDE CONTRACT



### STRUCTURE

6060-T5 non-deformable aluminium

- . Made-to-measure and made-to-order products too
- . Side-by-side modular elements
- . Also available without lights
- . Min. size 410mm
- . Max. size 1850mm

### MIRRORS

10 times more resistant to corrosion - 3 times more resistant to scratches compared to conventional mirrors Does not contain copper or formaldehyde and complies with the criteria set forth in the European - RoHS Directive (< 0.1% of lead)

Long-lasting in typically damp environments  
Safety Film

### I-LIGHT TECHNOLOGY (patented)

The light lenses, set directly into the reflective surface, cut with high-precision instruments, diffuse light generated by I-Light technology incorporated into the structure of the mirror.



Each I-LIGHT module is composed of three light lenses.  
Each mirror has at least six lenses, composed of two I-LIGHT modules with three light lenses each.

Light gradation 4200° kelvin

Guaranteed life cycle: 100,000/h

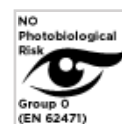
Low energy consumption

Photobiological hazard: none

Actuator:

Quick touch = on/off the light

Press and hold = brightness +/-



NO blue light



Light adjustment



Safety Film



4200 K



Input 110-240 V



Low energy



No bulbs required



I-Light European patent



CE conformity



Easy to assemble



Handmade products



Italian production

**TECHNICAL SPECIFICATIONS FOR THE DEVICE**

TYPE:	Mirror with 6 light points
MODEL:	MDE
VOLTAGE:	110/240 Vac 50/60 Hz
CURRENT:	106 mA max
POWER:	25 W max
POWER FACTOR 240Vac, 60Hz:	Cosφ = 0,95

**LED SOURCE CHARACTERISTICS:**

- . Trademark: CANTONI TRADING SRL
- . Power voltage and tension: 28.3 Vdc, 0.325A
- . Total nominal power: 9.2 W
- . Position and purpose of the connections: on the LED module
- . tc: 55°C
- . Photobiological hazard: none

The light source contained in this equipment may only be replaced by the manufacturer , its service department or equivalent qualified personnel.

Device for indoor use only , IP20

The device is designed to operate within a temperature range of 0-40°C (Ta)

The electrical output cable of the mirror is not equipped with the plug: it needs to be connected to the electrical wiring of the room.

**CE conformity declaration**

Complies with the essential requirements of EU directives applicable to the product: Low Voltage Directive 2014/35/EU, Electromagnetic Compatibility Directive 2014/30/EU and ROHS Directive 2011/65/EU, when installed in compliance with these instructions..

All products by Cantoni are made in Italy with carefully selected materials.

Each product is the result of a careful study to ensure the best balance between aesthetics and technology.  
The authenticity of each piece by Cantoni is ensured by our trademark.

We are always available to respond to every request and question about products.  
Our technical department is then available for custom projects

PLEASE NOTE:

Cantoni reserves the right to modify at any time the items in the catalogue for technical or commercial purposes.  
Shipments are made from our offices in San Marino

**CANTONI TRADING SRL**

Headquarters and Showroom

Via Guardia di Rocca 10 - 47899 Galazzano - Rep. San Marino

Tel. +378 0549 977527 - Fax +378 0549 876501

[sales@lineaunica.com](mailto:sales@lineaunica.com)

[www.lineaunica.com](http://www.lineaunica.com)