









UNICA
LUXURY LIGHTED MIRRORS
by Cantoni

MF MIRROR LINE

These lighted **mirrors** are **unique**,
made-to-measure **sculptures of light**

	Line and Mission	4
	I-light	5
	MF line	6
	Standard dimensions	12
	Technical Details	14
	Quality	17

The **light is perfect** if has the ability to create suggestions and wake up deep sensations.

It is just this emotional light that is the distinctive feature of **Unica's** furnishing range of **products**.





AND THERE WAS LIGHT. (but not a common one)

The perfect light can create suggestions and give rise to deep feelings. It's this emotional light to be the distinctive feature of Unica, a complete range of illuminated mirrors staging the full expressive force of contemporary luxury.

Each mirror resulting from the Italian craftsmanship is a unique piece combining design, technological innovation and functionality harmoniously.

Cantoni goal is to support architects, interior designers and furniture companies in the creation of astonishing and highly functional bathrooms for Luxury hotels, spa and residential facilities, thanks to mirrors subverting the usual rules and losing their role of mere furnishings in order to become structural elements of space in which the light is the absolute protagonist.

I-light system in numbers:

- . Shade of light: 4200°kelvin degree
- . Lights life: 100.000h/min.
- . Power Consumption: 4Watt/h/ light point
- . Required bulbs: none
- . Universal Power socket: 110V-240V



I-LIGHT: a combination of function and style

The greatest ideas come from an endless passion and a patient and daily testing. That is why in Cantoni the contamination between design, research and experience has resulted in I-light technology.

I-Light is a new lighting technology, Cantoni patented, fully-integrated in the structure of every mirror of the Unica range and recreating the colour rendering and the incidence of sunlight with absolute perfection.

The light sources are **not light bulbs**, but lenses made of a highly-refractive, unbreakable material that are capable of spreading and shielding light in a perfectly even manner and completely enveloping the figure.

Every single detail has been studied and analysed: from the distance between the light points to the uniformity of the light emission, paying the utmost care and attention to the **perfect colour gradation.**

It does not generate heat, it does not bother the eyes, it wraps the face with a perfect color rendering

Dimmable, low energy consumption, CE certified.



MF Mirror Line

Our wealth is knowing how to **create luxury**

Design: **Cantoni**

Result of the perfect synergy between industrial design approach, care craftsmanship and creativity, the line of illuminated mirrors with MF frame is the modern concept of luxury, in a dance moving between the icy clarity of glass and the warmth of ancient and living materials such as wood

The MF mirrors are sculptures of light, which tell a story and add a touch of class to any space.

Size, light, style and material: **each mirror is a unique and customizable** piece produced by Italian craftsmen.

Furnish the bedroom



MF Mirror line

Design: **Cantoni**

The most intimate, personal and ephemeral paintings: these **sheets of mirroring glass**, illuminated by **opalescent lenses**, full of sunlight, return our **portrait as a work of art.**

Renowned Italian artistic woodworking and advanced research light meet in the long history of Cantoni, creating a collection of unique mirrors, each one representing a sculpture with its own identity and character.



Linea MF contemporary*

Design: **Cantoni**

MF wall mirror with hand-decorated wood frame with silver leaf.

I-light integrated lighting technology, side actuator.
Customised and on-demand production.

*example of customised creation mirror 1020x700 mm

Furnish the boutique spaces



Furnish the beauty spaces





Linea MF classic*

Design: **Cantoni**

MF wall mirror with hand-decorated wood frame with white veneer grey.

I-light integrated lighting technology, side actuator.

Customised and on-demand production.

*example of customised creation mirror 1020x1800 mm



Linea MF baroque*

Design: **Cantoni**

MF wall mirror with hand-decorated wood frame with gold leaf.

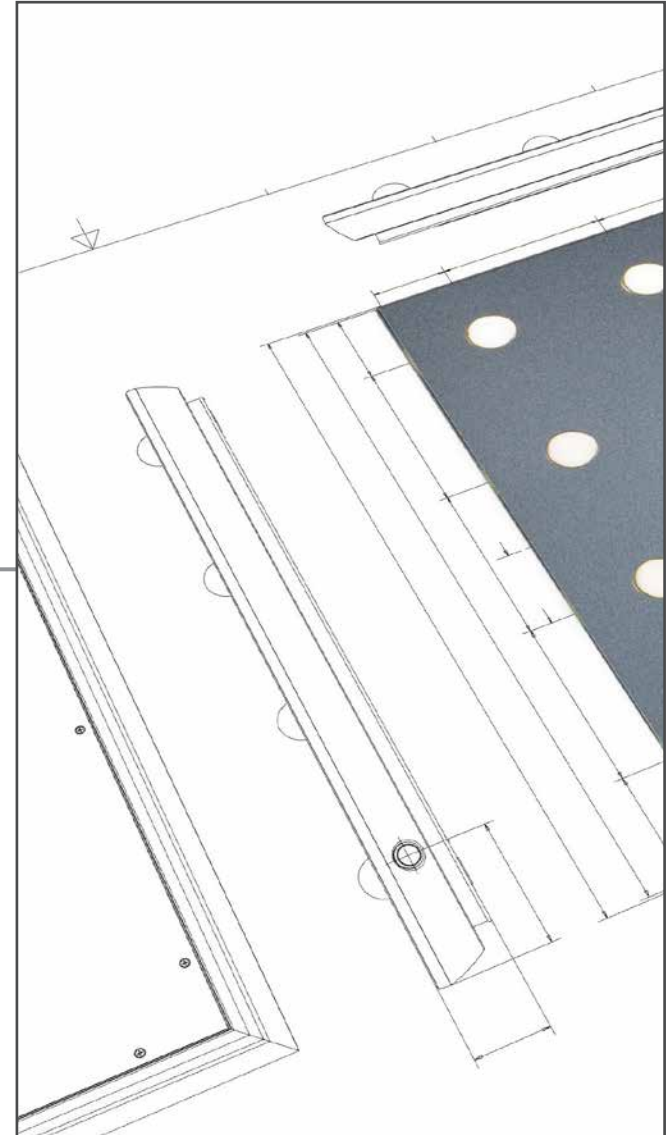
I-light integrated lighting technology, side actuator.

Customised and on-demand production.

*example of customised creation mirror 700x1020 mm

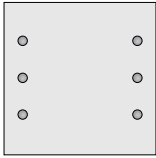
STANDARD DIMENSIONS

MF Line

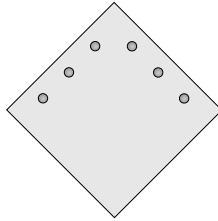


Standard sizes available to which frames are applied

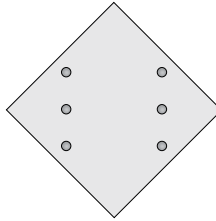
700x700 mm



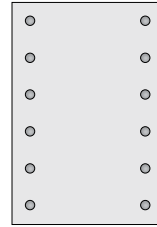
840x840mm



840x840 mm



700x1020 mm



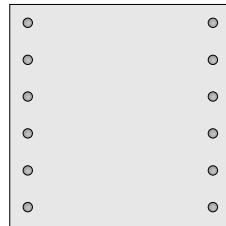
1020x700 mm



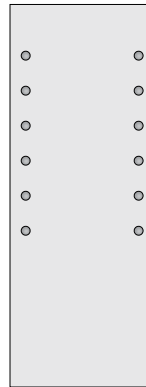
1020x700 mm



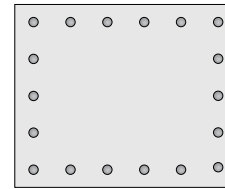
1020x1020 mm



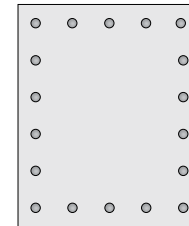
700x1850 mm



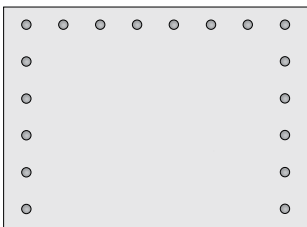
1020x840 mm



840x1020 mm



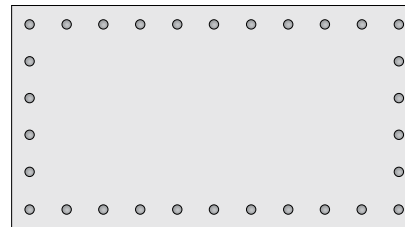
1400x1020 mm



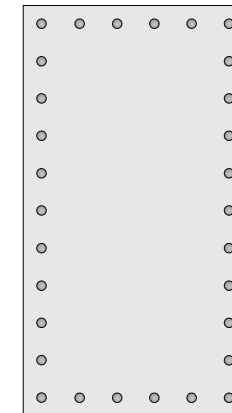
1020x1800 mm



1865x1020 mm



1020x1865 mm



Cantoni will assess feasibility, methods, costs and times for the customisation of products on a case-by-case basis.

TECHNICAL SHEET

MF Line



STRUCTURE

- . Wooden frame in different finishes available in Baroque style - Contemporary style - Classic style
- . Made-to-measure and made-to-order products too
- . Crush-proof inner structure
- . Also available without lights
- . Min. size 410mm
- . Max. size 1850mm

MIRRORS

10 times more resistant to corrosion - 3 times more resistant to scratches compared to conventional mirrors Does not contain copper or formaldehyde and complies with the criteria set forth in the European - RoHS Directive (< 0.1% of lead)
 Long-lasting in typically damp environments
 Safety Film

I-LIGHT TECHNOLOGY (patented)

The light lenses, set directly into the reflective surface, cut with high-precision instruments, diffuse light generated by I-Light technology incorporated into the structure of the mirror.



Each I-LIGHT module is composed of three light lenses.
 Each mirror has at least six lenses, composed of two I-LIGHT modules with three light lenses each.
 Up to thirty lenses can be fitted, composed of ten I-LIGHT modules with three light lenses each.

Light gradation 4200° kelvin
 Guaranteed life cycle: 100,000/h
 Low energy consumption
 Photobiological hazard: none

Actuator:
 Quick touch = on/off the light
 Press and hold = brightness +/-



NO blue light



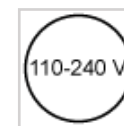
Light adjustment



Safety Film



4200 K



Input 110-240 V



Low energy



No bulbs required



I-Light European patent



CE conformity



Easy to assemble



Handmade products



Italian production

TECHNICAL SPECIFICATIONS FOR THE DEVICE

TYPE::	Mirror with 6 light points	Mirror with 9 light points	Mirror with 12 light points	Mirror with 18 light points	Mirror with 21 light points	Mirror with 24 light points	Mirror with 30 light points
VOLTAGE:	110/240 Vac 50/60 Hz	110/240 Vac 50/60 Hz	110/240 Vac 50/60 Hz	110/240 Vac 50/60 Hz	110/240 Vac 50/60 Hz	110/240 Vac 50/60 Hz	110/240 Vac 50/60 Hz
CURRENT:	106 mA max	159 mA max	212 mA max	318 mA max	370 mA max	424 mA max	560 mA max
POWER:	25 W max	38 W max	50 W max	75 W max	88 W max	100 W max	125 W max
POWER FACTOR 240Vac, 60Hz:	Cosφ = 0,95	Cosφ = 0,95	Cosφ = 0,95	Cosφ = 0,95	Cosφ = 0,95	Cosφ = 0,95	Cosφ = 0,95

The light source contained in this equipment may only be replaced by the manufacturer , its service department or equivalent qualified personnel.

Device for indoor use only , IP20

The device is designed to operate within a temperature range of 0-40°C (Ta)

The electrical output cable of the mirror is not equipped with the plug: it needs to be connected to the electrical wiring of the room.

LED SOURCE CHARACTERISTICS:

- . Trademark: CANTONI TRADING SRL
- . Power voltage and tension: 28.3 Vdc, 0.325A
- . Total nominal power: 9.2 W
- . Position and purpose of the connections: on the LED module
- . tc: 55°C
- . Photobiological hazard: none

CE conformity declaration

Complies with the essential requirements of EU directives applicable to the product: Low Voltage Directive 2014/35/EU, Electromagnetic Compatibility Directive 2014/30/EU and ROHS Directive 2011/65/EU, when installed in compliance with these instructions..

All products by Cantoni are made in Italy with carefully selected materials.

Each product is the result of a careful study to ensure the best balance between aesthetics and technology.
The authenticity of each piece by Cantoni is ensured by our trademark.

We are always available to respond to every request and question about products.
Our technical department is then available for custom projects

PLEASE NOTE:

Cantoni reserves the right to modify at any time the items in the catalogue for technical or commercial purposes.
Shipments are made from our offices in San Marino

CANTONI TRADING SRL

Headquarters and Showroom

Via Guardia di Rocca 10 - 47899 Galazzano - Rep. San Marino

Tel. +378 0549 977527 - Fax +378 0549 876501

sales@lineaunica.com

www.lineaunica.com